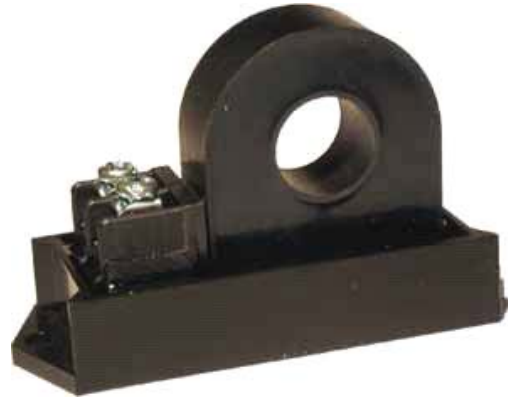


FEATURES:

- ◆ Highly accurate, true RMS measurement.
- ◆ Self powered from the 4 - 20 mA loop.
- ◆ Robust construction (potted box).
- ◆ Compact size and easy wiring.
- ◆ Ideal for Control and Energy Management applications.



APPLICATION:

The **E-652A** transducer offers inexpensive yet accurate true RMS monitoring of AC current in one circuit.

This product is ideal as a precision AC load transducer for Control and Energy Management applications.

Combined with a standard 5A CT the loop powered **E-652A** provides a convenient tool for accurate load monitoring in any electrical equipment.

PRODUCT DESCRIPTION:

The **E-652A** is a precision current transducer that performs true RMS current measurements in one AC circuit wired through an interfacing CT mounted on the top of the enclosure.

The **E-652A** may be ordered for various current ranges. The 0-5A and 0-10A current ranges feature a very high accuracy CT providing 0.3% accuracy (full scale). Other standard ranges include 30A, 50A and 100A. The 5A calibrated i-Snail[®]-A can be applied to the secondary wire of a 5A CT thus extending the metering range as required.

The **E-652A** is powered from the 4 -20 mA current loop (it acts as a 'two wire loop device'). It will accept a wide range of loop excitation voltages, typically 24 VDC. The unit is hermetically potted in a small plastic enclosure equipped with two mounting holes. A barrier strip terminal is provided for the output wiring.

The **E-652A** does not include a built in CT and is equipped with spade connectors allowing remote installation of various Elkor miniature CTs (MCTA and MSCT).

SPECIFICATIONS:

Power: Standard 4-20 mA loop; voltage 8 - 35 VDC

Current Input: Wire current input through CT up to calibrated Range. Unit may be wired off a secondary 5A CT for higher input ranges.

Output: 4-20 mA loop (sinking); max. impedance 750 ohm @24VDC (barrier strip terminal provided).

Accuracy: TRMS, 0.3% FS for 0-5A & 0-10A ranges, 0.5% for other ranges.

Enclosure: Potted plastic box L=3", W=1.1", H=0.4" + CT height, panel mount ready. Interfacing CT permanently attached

(non universal version); Dielectric test (input/output) - 4 kVRMS

Input Range	Part Number	Accuracy (full scale)	Window Size	Maximum Wire Size
0-5A	E-652A-5	0.3%	6.9mm (0.272")	AWG #10
0-10A	E-652A-10			
0-30A	E-652A-30	0.5%	9.5mm (0.375")	AWG #8
0-50A	E-652A-50			
0-100A	E-652A-100		14.5mm (0.570")	AWG #2
Universal (MCTA or MSCT)	E-652A (CT Type and full scale must be specified)	See MCTA and MSCT specifications		