

**ETCLO-832 DUAL COMPRESSOR
SAFETY CONTROLLER BOARD
WITH ANTI-SHORT CYCLE DELAY AND LEAD-LAG SELECTOR**

The ETCLO-832 Compressor Safety Control has an anti-short cycle, pump down solenoid valve time delay and lead lag multi settings. It is designed for use with any single and two-stage air conditioning and refrigeration equipment for compressor operation and protection control. If during normal operation, any safeties are opened (low or high pressure switches), the compressor will shut off immediately. The controller then restarts the A/C unit again and a warning flag will be set. The compressor will be lockout if safeties opened for second time. The A/C unit can be restarted manually by opening and closing the thermostat contact, which reset the board. The fault can be attended to at any convenient time. The early warning feature will save the compressor from burn out.



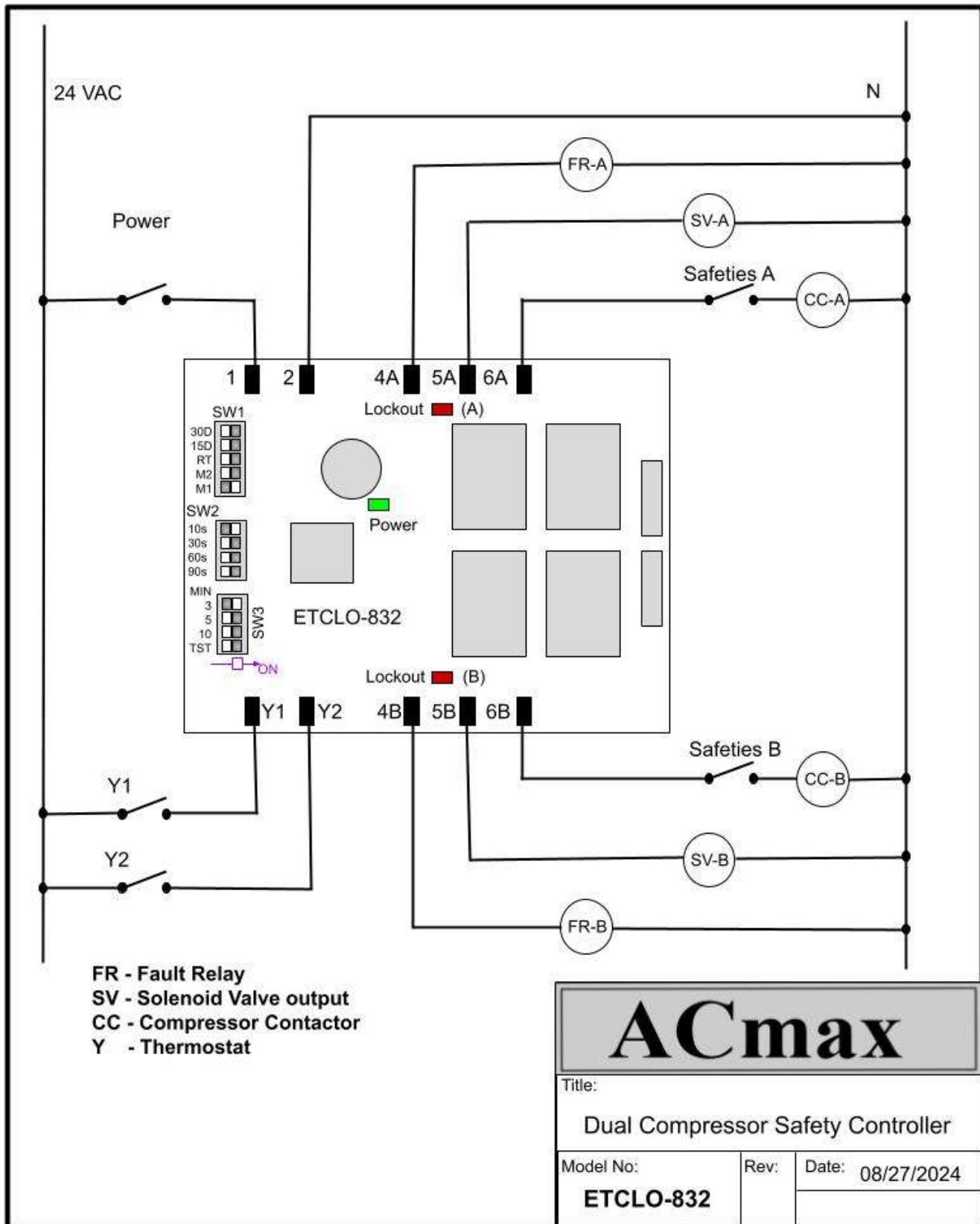
FEATURES:

- Microprocessor based controller.
- Random start of 0-60 seconds to avoid simultaneous start of several units during power interruption.
- Anti-short cycle time delay (0, 3, 5 or 10 minutes) selection.
- Relay output for pump down solenoid valve operation.
- Time delay settings for pump down solenoid valve (0, 10, 30, 60 and 90 seconds).
- Time delay of 30 seconds between the two compressors.
- Built in automatic warning flag setting to monitor the fault for a period of 30 minutes from the first fault signal.
- Manual and automatic setting for compressor rotation (lead-lag sequence change-over). Five settings include runtime; every 15 days or every 30 days with automatic change over.
- TRIAC fault output for alarm signal.
- LED status indicators (power and fault)
- On board test mode jumper for fast testing and diagnostic.

SPECIFICATIONS:

- Input power supply: 24VAC, 50/60 HZ
- Power consumption: 4 VA @ 24 VAC (board only).
- Output (compressor): SPST relay contact
- Output (fault): Solid state, TRIAC
- Relay output current: 1000 mA continuous.
- Operating conditions: -40 to + 167 F Temp, 10% to 90% Humidity (non condensing).
- Dimensions (LxWxH): 4" x 3.375" x 1.375" Mounted in Snap-Track (provided).

The ETCLO-832 is provided with full size Snap Track for easy installation.



ETCLO-832 Typical Connections