

LF37 diaphragm pressure switch

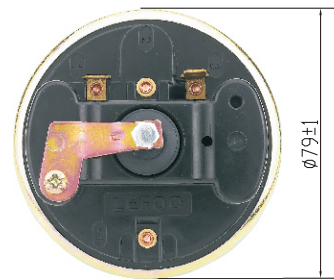
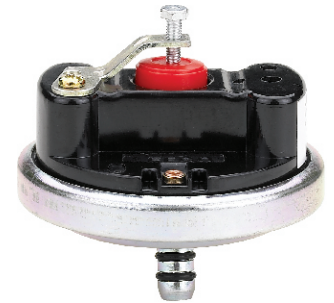


LF37 diaphragm pressure switch is available for various sumps, effluent, and sewage application to control the liquid level. Various switch settings are available for to turn-on or turn-off the pump. The diaphragm pressure sensing design make it more reliable than traditional float ball mechanism.

Specification

Model	LF37
Medium	Air, Water or other Non-hazardous liquid
Basic function	Diaphragm Pressure switch operation: provide water level signals to appliance control, level value can be set on customer request
Pressure Range/ liquid level Range	2-60 inch/H ₂ O
Proof Pressure	5PSI
Contact Type	SPDT, SPST-NC/NO
Electrical data	12/13.8A, 125VAC 10A, 250VAC 1/2HP, 125/250VAC 3/4HP, 125/250VAC
Ambition Temperature	40℃
Terminal	6.3×0.8 blade, #8-32 screws

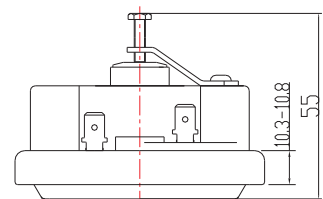
Conversion: 1mbar=100pa 1"W.C.=249pa



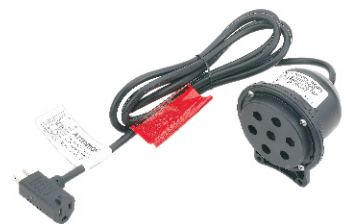
LF37 Order Ref No:

i.e.: LF37-111-4.5" - 6" H₂O

- Pressure setting: Cut in: 6" H₂O Cut off: 4.5" H₂O
- Cover: With Cover
- Contact Arrangement: SPDT
- Connection Type: Diaphragm



Number	Connection Type	Contact Arrangement	Cover
0	/	/	None Cover
1	Diaphragm	SPDT	With Cover
2	φ 6mm for tube	SPST-NO	/
3	/	SPST-NC	/
4	/	/	/
5	/	/	/
6	/	/	/



尺寸单位: mm
(Dimension in mm)